



# Data Mapping Diagrams for Data Warehouse Design with UML

---

Sergio Luján-Mora  
Juan Trujillo



Panos Vassiliadis



## Contents

---

- Introduction
- Framework and Motivation
- Attributes as First-Class Modeling Elements in UML
- The Data Mapping Diagram
- Conclusions and Future Work



## Contents

---

- Introduction
- Framework and Motivation
- Attributes as First-Class Modeling Elements in UML
- The Data Mapping Diagram
- Conclusions and Future Work



## Introduction

---

- ETL (Extraction-Transformation-Loading) processes are crucial in DWs
- However, most of research on conceptual modeling focused on the DW repository
- So far, no conceptual model can combine
  - Fine level of detail at the attribute level
  - Widely accepted modeling formalism (ER or UML)
- Reason: formalisms (such as ER or UML) treat attributes as second-class citizens
  - Attributes cannot serve at the end of an association



## Introduction

---

- Our proposal: a new UML diagram called the “*data mapping diagram*” to model ETL processes at various levels of detail
  - Attributes can be treated as first-class citizens (*FCML*)
  - UML is extended through the extension mechanisms
  - Attributes are formally mapped to proxy classes that can participate in associations for inter-attributes mappings
  
- KEY ASPECT
  - Integrated in a global approach for the modeling of DWs, based on the UML (ER02 & 03, UML02, IEEE)



## Contents

---

- Introduction
- Framework and Motivation
- Attributes as First-Class Modeling Elements in UML
- The Data Mapping Diagram
- Conclusions and Future Work



## Contents

---

- Introduction
- Framework and Motivation
- Attributes as First-Class Modeling Elements in UML
- The Data Mapping Diagram
- Conclusions and Future Work



## Framework and Motivation

---

- A DW architecture is usually depicted as various layers of data (*Jarke et al.*)
- Our overall framework is divided into **five stages** and **three levels** → different DW diagrams
  - UML extensions
- Phases
  - Sources → external data sources (DS)
  - Integration → mapping between DS and the DW
  - Data Warehouse
  - Customization → mapping between DW and clients
  - Client → specific client accessing structures

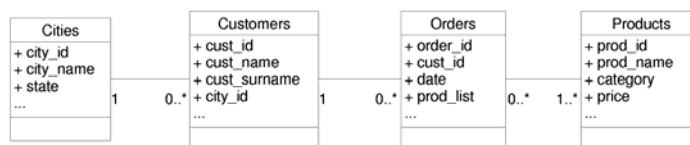


## Framework and Motivation

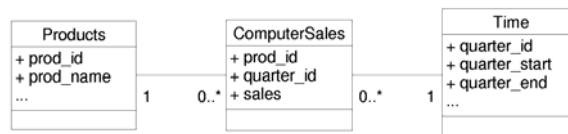
- Levels
  - Conceptual → DW conceptual modeling
  - Logical → logical aspects of the DW (e.g. ETL)
  - Physical → e.g. storage of the ETL processes
- Diagrams → Several UML profiles have been proposed. In this work: *Data mapping diagram*
- Motivating Example
  - Building a DW from the retail system of a company



## Framework and Motivation



Source Conceptual Schema (SCS)



Data Warehouse Conceptual Schema (DWCS)

- **Data Mapping Diagram** shows the relationships between the data sources and the DW, and between the DW and client's structures



## Contents

---

- Introduction
- Framework and Motivation
- Attributes as First-Class Modeling Elements in UML
- The Data Mapping Diagram
- Conclusions and Future Work



## Contents

---

- Introduction
- Framework and Motivation
- Attributes as First-Class Modeling Elements in UML
- The Data Mapping Diagram
- Conclusions and Future Work



## Attributes as first-class citizens

- Both ER and UML, attributes are embedded in the definition of their comprising “element”
  - Not possible to create a relationship between two attributes
- In ETL processes → crucial to specify attribute relationships
- In a UML class diagram, first-class citizens:
  - Classes
  - Associations
    - Association classes



## Attributes as first-class citizens

- In our approach: classes and attributes are defined as normally in UML
  - However, attributes can be treated independently as second-class citizens when necessary
- A UML extension:
  - Def.1. *Attribute classes* are materializations of the <<Attribute>> stereotype → for representing the attributes of a class
  - Def. 2. <<Contain>> stereotype is a composite aggregation between a *container* class and its corresponding *attribute classes*
  - Def. 3. An *attribute/class diagram* is a regular UML class diagram extended with <<Attribute>> classes and <<Contain>> relationships



## Contents

---

- Introduction
- Framework and Motivation
- Attributes as First-Class Modeling Elements in UML
- The Data Mapping Diagram
- Conclusions and Future Work



## Contents

---

- Introduction
- Framework and Motivation
- Attributes as First-Class Modeling Elements in UML
- **The Data Mapping Diagram**
- Conclusions and Future Work





## The Data Mapping (DM) Diagram

- DM are complementary to other UML diagrams
- A DW can be described by a set of complementary DM diagrams at different levels of detail
- UML packages are used to organize them in different levels (4 levels)

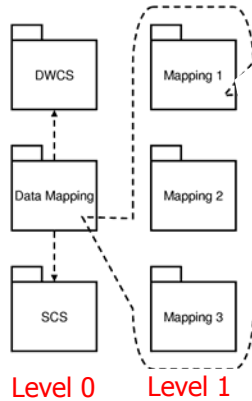


## The Data Mapping (DM) Diagram

- Database level (Level 0)
  - Each schema of the DW (e.g. sources, DW) is represented as a package.
- Dataflow level (level 1)
  - Data relationship among the individual source tables towards the respective targets in the DW
- Table level (level 2)
  - Details all the intermediate transformations and checks that take place during this flow. Normally, packages are used to represent sequential steps of the DM
- Attribute level (level 3)
  - Involves the capturing of inter-attribute mappings
    - Two variants

## The Data Mapping Diagram

- Database and dataflow diagrams (0 and 1) use traditional UML elements
  - Packages for modeling data relationships
  - Dependency relationships between packages



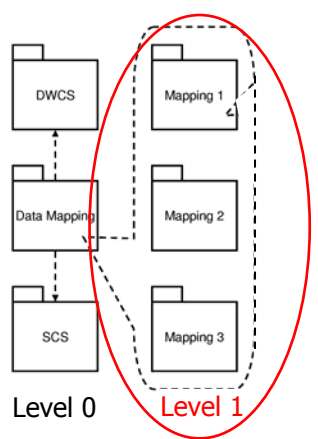
## The Data Mapping Diagram

- Level 0: a simple relationship among the DWCS and the SCS exists
  - Captured by a single Data Mapping package and these three design elements



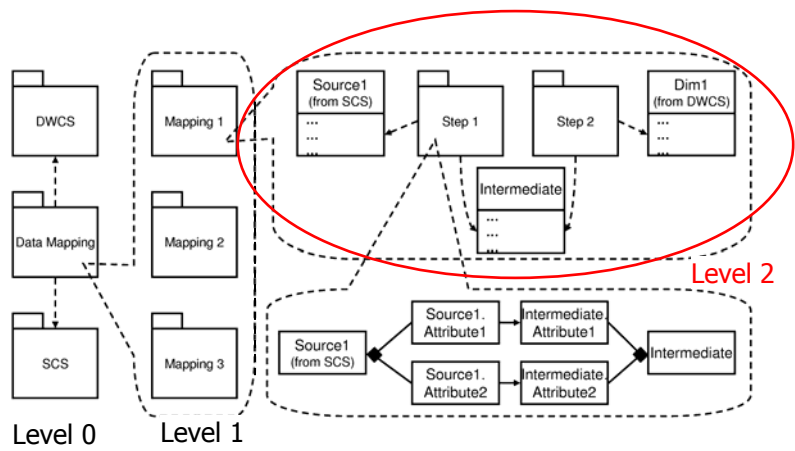
# The Data Mapping Diagram

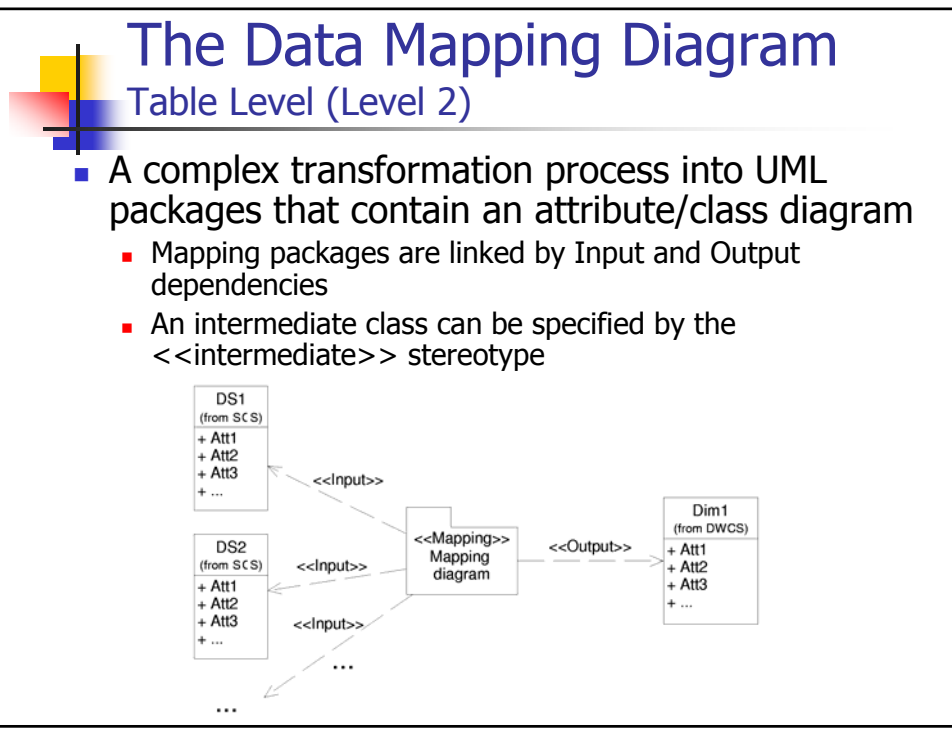
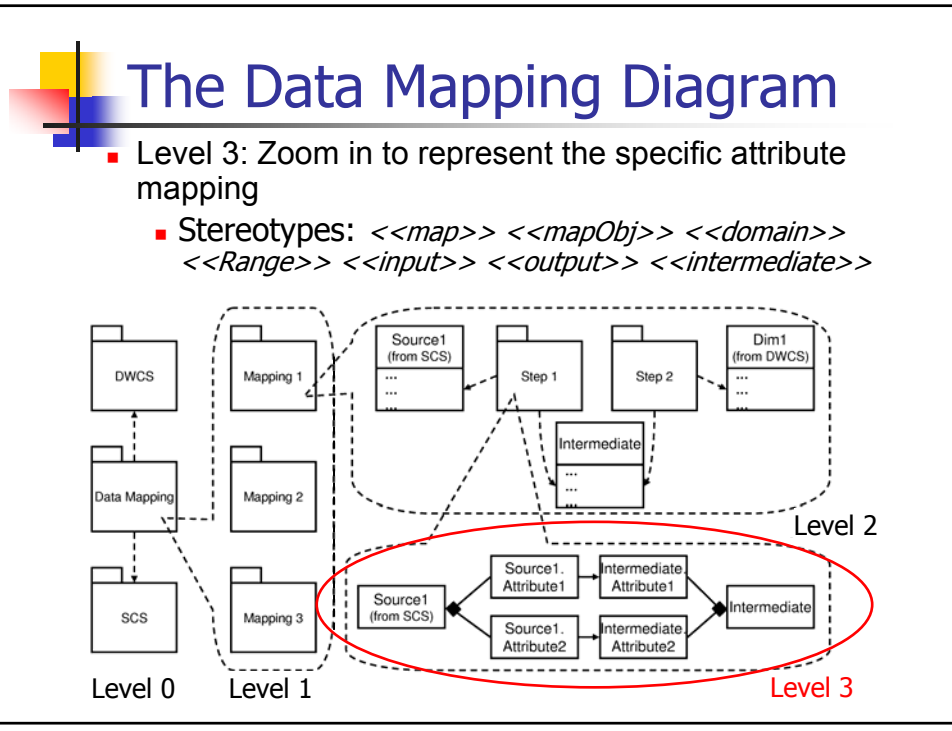
- Level 1: three particular tables to populate → three main scenarios for populating the DW
  - Captured by three Data Mapping packages



# The Data Mapping Diagram

- Level 2: Zoom in to represent the particular transformation/mapping
  - Stereotypes: `<<mapping>>` `<<input>>` `<<output>>`





## The Data Mapping Diagram

### Attribute Level (Level 3)

- Relationships between the attributes of the classes involved in a data mapping. Two variants:
  - **Compact Variant:** relationships represented as *associations*, and the semantic of the mapping described in a UML *note*
    - Less cluttered diagrams, but less semantic impact
  - Formal variant: relationships represented by a *mapping object*, and the semantic of the mapping described in a *tag definition*
    - More modeling elements, but more formal semantics

## The Data Mapping Diagram

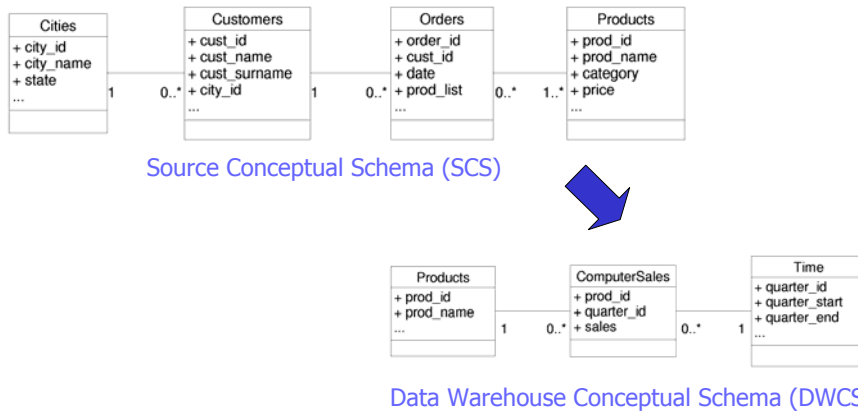
### Attribute Level (Level 3). Compact variant

- Elements are imported from other diagrams
- Attributes are represented as <<Attribute>> classes
- <<Attribute>> classes connected by association relationships and the navigability
- Association relationships adorned with the stereotype <<Map>>
- UML notes to specify how the target attribute of the DW is obtained from the source one

# The Data Mapping Diagram

## Motivating example

- Calculate the quarterly sales of the products belonging to the computer category



# The Data Mapping Diagram

## Motivating example

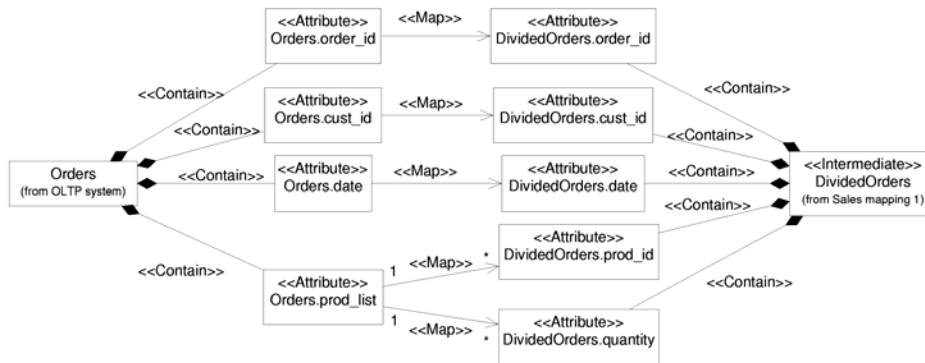
- Level 2 of the data mapping diagram



# The Data Mapping Diagram

## Motivating example

- Dividing** splits each input order according to its prod\_list into multiple orders, each with a single ordered product (prod\_id) and quantity (quantity)



# The Data Mapping Diagram

## Motivating example

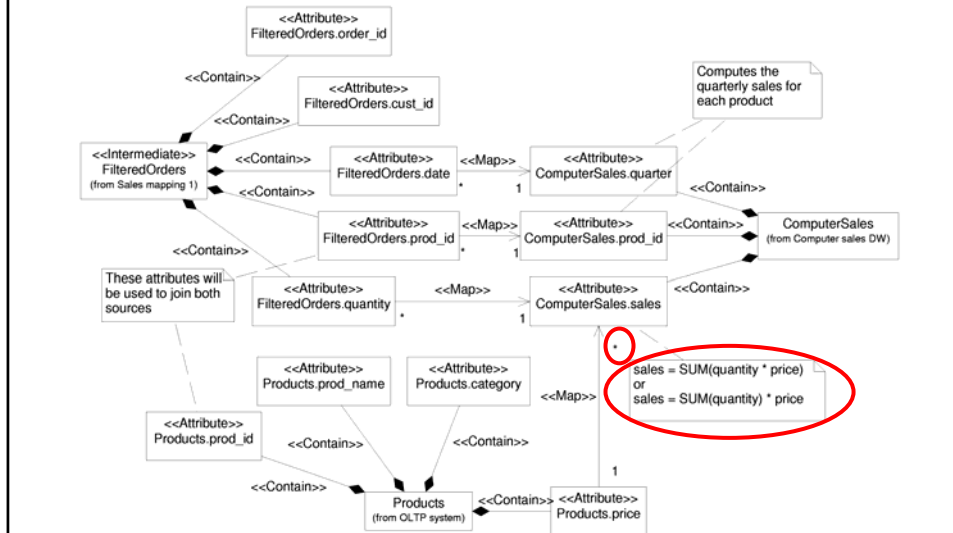
- Filtering** filters out products not belonging to the computer category. UML note specified.



# The Data Mapping Diagram

## Motivating example

- Aggregating computes the quarterly sales for each



## Contents

- Introduction
- Framework and Motivation
- Attributes as First-Class Modeling Elements in UML
- The Data Mapping Diagram
- Conclusions and Future Work





## Contents

---

- Introduction
- Framework and Motivation
- Attributes as First-Class Modeling Elements in UML
- The Data Mapping Diagram
- Conclusions and Future Work



## Conclusions and Future Work

---

- A framework for the design of ETL processes at very low levels of granularity
- Modeling relationships between sources and targets
- Provide a new *Data mapping* diagram and formally extend UML to allow us to treat attributes as first class modeling elements
  - Using packages allow us zoom in and out, thus considering different levels of details



## Conclusions and Future Work

---

- Immediate future work
  - Implementing the Compact approach
    - Considering more formal semantics instead of notes
  - A complete implementation mapping in a target platform and existing ETL tools (e.g. DB2 Center, OWB and so on)
- Further work
  - This approach can be applied to the modeling of XML documents, specification of Web services or materialization of database views.

## Data Mapping Diagrams for Data Warehouse Design with UML

---



Sergio Luján-Mora  
Juan Trujillo

Panos Vassiliadis

